

NAQI[®]

SKIN CARE INNOVATORS

PRODUCT CATALOGUE 2024

NAQI[®]
SKIN CARE INNOVATORS

Content

| | | | |
|---------------------------|-----------|--------------------------------|-----------|
| PROFESSIONAL RANGE | 4 | ORAL CARE | 20 |
| MASSAGE LOTIONS | | ORAL CARE GEL | 21 |
| MASSAGE LOTION LIGHT | 5 | ORAL CARE GEL PRO | 21 |
| MASSAGE LOTION MEDIUM | 5 | ORAL CARE WASH & RINSE | 21 |
| MASSAGE LOTION ULTRA | 6 | | |
| MASSAGE LOTION SPORT | 6 | SPORTS LOTIONS | 22 |
| MASSAGE LOTION PLUS | 6 | PREPARE | |
| MASSAGE LOTION ULTRA PLUS | 6 | ANTIFRICTION CREAM | 23 |
| MASSAGE LOTION MENTHOL | 7 | FOOT DEO | 23 |
| MASSAGE LOTION COOL | 7 | FACE PROTECTOR | 24 |
| MASSAGE LOTION RELAX | 7 | LIP CARE | 24 |
| WAX | 7 | VOTRA PLUS | 24 |
| | | AERO SPEED GEL | 24 |
| PRE-TAPING | | | |
| CLEAN SKIN SPRAY | 8 | PROTECT | |
| | | WARMING UP COMPETITION | 25 |
| ULTRASOUND GEL | | WARMING STICK | 26 |
| ULTRASON GEL | 8 | START OIL | 26 |
| | | WARMING UP | 26 |
| THERAPEUTIC GELS | | COOL DOWN | 26 |
| ARNICA | 8 | COOLING SPRAY | 27 |
| INFLAM GEL | 9 | | |
| LYMPHE GEL | 9 | RECOVER | |
| PLUS GEL | 9 | RECOVERY GEL | 28 |
| COOL GEL | 9 | | |
| | | BODY WASH | |
| AFTER CARE | 10 | RAPID CLEAN GEL | 29 |
| CICA | 11 | SPORT SHOWER | 29 |
| REPAIR | 12 | CLEANSER GEL | 29 |
| SKIN OPTIMISING OIL | 12 | | |
| SILICON TOUCH | 13 | | |
| | | COLD & HOT | 30 |
| DAILY CARE | 14 | COLD THERAPY | |
| FOOT DEO CREAM GEL | 15 | COLD PACKS | 31 |
| VISAGE | 15 | SLEEVES | 31 |
| BODY SCREEN | 16 | COLD PACK SPORT | 32 |
| FINGERTIP CARE | 16 | | |
| BODY LOTION | 17 | COLD & HEAT THERAPY | |
| BODY CARE | 17 | COLD HOT PACK | 32 |
| FOOT CARE | 17 | | |
| BODY SOAP | 17 | HEAT THERAPY | |
| | | HOT PACK | 32 |
| HAND CARE | 18 | | |
| LIQUID SOAP | 19 | PRIVATE LABEL | 33 |
| HAND EMULSION | 19 | COSMETICS | 34 |
| | | MEDICAL | 35 |

Belgian



Manufacturer



Your skin is your best friend

Your skin is your body's largest organ. With its sensitivity, you can feel the outside world. It largely determines your mood and well-being.

Nobody has more experience in caring for and protecting your skin than NAQI®. We increase comfort for millions of people in the United Kingdom, Japan, China and the United Arab Emirates, Australia, Chile and, of course, about half of Europe.

Comfortable in your skin with NAQI®

We offer you cooling when it's hot, accelerate recovery, provide a pleasant massage, stimulate sporting performance, help you heal after scarring, improve the healing process for burns, increase the efficiency of electrotherapy, and so much more.

Our outstanding care products can be found all over the place, in city-bags and leisure bags or travelling cases, in sports bags, in physiotherapy practices and in hospitals.

Trust the expertise of NAQI®

NAQI® has an exceptionally strong position in healthcare and has created an excellent reputation. This is thanks to the quality that we have been delivering all these years, but is also due to the strong focus on innovation and constant product improvement.

Our professionals apply their expertise to product development and production under private label.

"Over 30% of all expenditure, including personnel costs,

goes to R&D. Around 80% of turnover comes from export. For over 30 years, we have focused on our sport/medical vision with innovative, skincare products, primarily for physiotherapists", says CEO Edgard Geyskens. He founded the company in 1986.

Stable, locally embedded, independent partner

NAQI® is a stable and reliable partner. We are still a family-led, completely independent production company, with its headquarters and R&D centre in Belgium. With a strong team of experienced, well-educated and highly motivated professionals.

We maintain close links with eminent partners such as sports federations, professional clubs, top athletes and medical experts, including academics from the universities of Brussels, Liege and Leuven.

Pushing boundaries with NAQI®

With our newly developed and super efficient Cooling Spray, NAQI® was also part of the 'Cold2Gold' project by Sport Vlaanderen which provided Olympic athletes with the best cooling techniques during the Games in Tokyo. This effort in relation to R&D supported a few stunning performances during the last Olympic Games. The men from the Belgian hockey team, for example, put on a fantastic final and, with the help of the NAQI® Cooling Spray, kept their cool during the tense shoot-out and took home a gold medal for their hard work.



Professional Therapy Range

NAQI®
SKIN CARE INNOVATORS

Massage and manual therapy are a **key part** of any treatment.
NAQI® offers a **wide range of products**
to complement each treatment.

Massage Lotions

NAQI[®] Massage Lotions are specifically developed for professional therapists to provide the optimal support during treatment. A massage lotion should provide the perfect glide for the designated therapy and simultaneously protect and nourish the skin of both therapist and customer.

NAQI[®] Massage lotions are **hypo allergenic and easy to rinse off**.

The **Liquid crystal structure** ensures that NAQI[®] Massage lotions will **intensively hydrate** and protect the skin. The lotions are pH-neutral and well tolerated, they are **non-greasy, easy to rinse off** and leave no stains.

Discover the perfect NAQI[®] Lotion for your treatments and choose from different levels of glide.



Dermatologically Tested



Hypoallergenic



Vegan Friendly



The Oil content in the lotion, from low for **short massage** to high for **long (sports) massage**



Product provides a warming sensation ranging from mild to hot



Product provides a cooling sensation

Massage Lotion Light

The ideal lotion for (short) daily treatments that provides intensive hydration and care for sensitive or fragile skin.



| Packaging | Product code | EAN | Weight | Quantity | Total Weight |
|-----------|--------------|---------------|--------|----------|--------------|
| 100 ml | MLL100 | 5425029891890 | 0,116 | 40 | 4,74kg |
| 200 ml | MLL200 | 5425029891364 | 0,234 | 12 | 3,1kg |
| 500 ml | MLL500 | 5425029890268 | 0,532 | 12 | 6,6kg |
| 5L | MLL5 | 5425029890732 | 5,280 | 1 | 5,28kg |

Massage Lotion Medium

The solution for therapists and clients with a sensitivity to mineral oils.



| Packaging | Product code | EAN | Weight | Quantity | Total Weight |
|-----------|--------------|---------------|--------|----------|--------------|
| 100 ml | MLM100 | 5425029891920 | 0,116 | 40 | 4,74kg |
| 500 ml | MLM500 | 5425029890312 | 0,520 | 12 | 6,5kg |
| 5L | MLM5 | 5425029890688 | 5,180 | 1 | 5,18kg |

Professional Therapy Range

Massage Lotion Ultra



A non-greasy lotion with excellent lubricating and dispersion properties. Ideal for use in clinic.

| Packaging | Product code | EAN | Weight | Quantity | Total Weight |
|-----------|--------------|---------------|--------|----------|--------------|
| 100 ml | MLU100 | 5425029891906 | 0,116 | 40 | 4,74kg |
| 200 ml | MLU200 | 5425029890237 | 0,214 | 12 | 3,1kg |
| 500 ml | MLU500 | 5425029890046 | 0,519 | 12 | 6,3kg |
| 5L | MLU5 | 5425029890374 | 5,120 | 1 | 5,12kg |

Massage Lotion Sport



Designed with extended massages in mind, this lotion provides exceptional glide, even on hairy skin, while limiting the greasy feeling.

| Packaging | Product code | EAN | Weight | Quantity | Total Weight |
|-----------|--------------|---------------|--------|----------|--------------|
| 100 ml | MLSP100 | 5425029891913 | 0,116 | 40 | 4,74kg |
| 200 ml | MLSP200 | 5425029890244 | 0,216 | 12 | 3,1kg |
| 500 ml | MLSP500 | 5425029890251 | 0,515 | 12 | 6,4kg |
| 5L | MLSP5 | 5425029890350 | 5,100 | 1 | 5,1kg |

Massage Lotion Plus



A gently warming lotion that leaves a soft and pleasant feeling of warmth with a long-lasting effect.

| Packaging | Product code | EAN | Weight | Quantity | Total Weight |
|-----------|--------------|---------------|--------|----------|--------------|
| 500 ml | MLP500 | 5425029892392 | 0,529 | 12 | 4,74kg |

Massage Lotion Ultra Plus



An intensely warming massage lotion. May cause redness to the skin.

| Packaging | Product code | EAN | Weight | Quantity | Total Weight |
|-----------|--------------|---------------|--------|----------|--------------|
| 100 ml | MLUP100 | 5425029891968 | 0,116 | 40 | 4,74kg |
| 500 ml | MLUP500 | 5425029890381 | 0,524 | 12 | 6,5kg |
| 5L | MLUP5 | 5425029890398 | 5,190 | 1 | 5,19kg |

Massage Lotion Menthol



Pleasantly simultaneously warming and refreshing: stimulates blood circulation with a warming feeling and provides a long-lasting refreshing feeling after treatment.

| Packaging | Product code | EAN | Weight | Quantity | Total Weight |
|-----------|--------------|---------------|--------|----------|--------------|
| 100 ml | MLME100 | 5425029891951 | 0,116 | 40 | 4,74kg |
| 500 ml | MLME500 | 5425029890985 | 0,520 | 12 | 6,5kg |
| 5L | MLME5 | 5425029890992 | 5,140 | 1 | 5,19kg |

Massage Lotion Cool



Provides a refreshing and invigorating effect. The ideal massage lotion to use in warm weather or after strenuous exercise.

| Packaging | Product code | EAN | Weight | Quantity | Total Weight |
|-----------|--------------|---------------|--------|----------|--------------|
| 100 ml | MLC100 | 5425029891944 | 0,115 | 40 | 4,71kg |
| 500 ml | MLC500 | 5425029890695 | 0,527 | 12 | 6,6kg |
| 5L | MLC5 | 5425029890701 | 5,230 | 1 | 5,2kg |

Massage Lotion Relax



A nourishing massage lotion with a relaxing effect on the muscles.

| Packaging | Product code | EAN | Weight | Quantity | Total Weight |
|-----------|--------------|---------------|--------|----------|--------------|
| 100 ml | MLR100 | 5425029891937 | 0,115 | 40 | 4,71kg |
| 500 ml | MLR500 | 5425029890275 | 0,527 | 12 | 6,5kg |

Premium Soft Tissue Wax



Unscented wax, suitable for all skin types non-greasy and easy to clean off.

| Packaging | Product code | EAN | Weight | Quantity | Total Weight |
|-----------|--------------|---------------|--------|----------|--------------|
| 500ml | PSTW500 | 5425029891517 | 0,513 | 18 | 9,5kg |

Professional Therapy Range

Pre Taping

Clean Skin Spray



Cleans the skin gently before any tape application to improve adhesion.

| Packaging | Product code | EAN | Weight | Quantity | Total Weight |
|-----------|--------------|---------------|--------|----------|--------------|
| 200ml | CSS200 | 5425029890343 | 0,207 | 12 | 2,6kg |

Ultrasound

Ultrason Gel



Neutral, hydrating viscous gel. Ensures optimal absorption of the ultrasound waves. A non-greasy and skin-friendly clear gel. Manufactured according to MDR 2017/745.

| Packaging | Product code | EAN | Weight | Quantity | Total Weight |
|-----------|--------------|---------------|--------|----------|--------------|
| 500ml | US500 | 5425029890190 | 0,537 | 12 | 6,719kg |
| 5L | US5 | 5425029890206 | 5,290 | 1 | 5,29kg |

Therapeutic Gels

These hydrogels with 5% essential oils have been created for a wide range of therapeutic treatments. The gels can be applied as a gel, or used as contact gel, as an ionising substance or mixed with a neutral massage lotion for manual therapy. The patients can easily continue the treatment at home. Natural, safe, easy and effective.

Arnica Gel



The ideal gel for sore muscles, as well as for bruises and minor injuries.

| Packaging | Product code | EAN | Weight | Quantity | Total Weight |
|-----------|--------------|---------------|--------|----------|--------------|
| 100ml | ARN100 | 5425029890404 | 0,137 | 20 | 2,9kg |

Inflam Gel



Improves the circulation and helps to keep joints and muscle supple. The gel has a gentle and pleasant refreshing feeling.

| Packaging | Product code | EAN | Weight | Quantity | Total Weight |
|-----------|--------------|---------------|--------|----------|--------------|
| 100ml | IG100 | 5425029890626 | 0,135 | 20 | 2,8kg |
| 500ml | IG500 | 5425029890633 | 0,520 | 12 | 6,5kg |

Lymph Gel



Stimulates the circulation and relieves the feeling of tired and heavy limbs. NAQI[®] Lymph gel has detoxifying properties and can be used complementary with compression hosiery.

| Packaging | Product code | EAN | Weight | Quantity | Total Weight |
|-----------|--------------|---------------|--------|----------|--------------|
| 100ml | LG100 | 5425029890640 | 0,135 | 20 | 2,8kg |
| 500ml | LG500 | 5425029890657 | 0,526 | 12 | 6,6kg |

Plus Gel



Improves the circulation and is ideal to relieve the feeling of tired arms and legs. Keeps muscles supple.

| Packaging | Product code | EAN | Weight | Quantity | Total Weight |
|-----------|--------------|---------------|--------|----------|--------------|
| 100ml | PG100 | 5425029890664 | 0,135 | 20 | 2,8kg |
| 500ml | PG500 | 5425029890671 | 0,526 | 12 | 6,6kg |

Cool Gel



A fast and reliable cooling gel with an immediate and long-lasting cold effect. Ideal first aid for bruises and sprains.

| Packaging | Product code | EAN | Weight | Quantity | Total Weight |
|-----------|--------------|---------------|--------|----------|--------------|
| 100ml | CG100 | 5425029892187 | 0,135 | 20 | 2,8kg |
| 500ml | CG500 | 5425029892194 | 0,526 | 12 | 6,6kg |



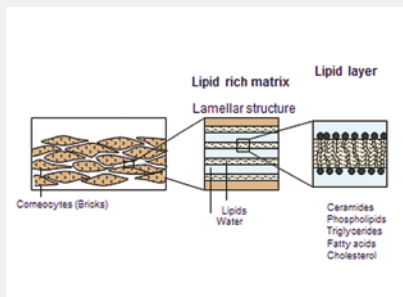
After Care

NAQI[®]
SKIN CARE INNOVATORS

Even after a wound is closed, the **skin regeneration is a long way** from being complete. The fragile, new skin is very sensitive and **needs specialized nourishment and care to repair** the barrier function and to reduce scarring, skin discoloration and itching. This healing process may take up to a year. **Appropriate on-going skin care is recommended.**

THE SKIN AND ITS FUNCTION

Our skin is a living organism and forms an excellent barrier. This barrier reduces water loss through the skin. It also stops anything getting in from outside. The skin is a complex structure with 3 layers; the epidermis, the dermis and the hypodermis. The lowest or basal layer of the epidermis is the active, dividing layer. These cells are continually dividing and multiplying and then rise gradually to the surface. Here they undergo changes from living cells (keratinocytes) to dead cells (corneocytes) which are ultimately lost either naturally or by aggression such as detergents or exfoliation. This continuous process of division and shedding takes about 28 days, but slows with ageing. The dead cells are surrounded by a lamellar lipid structure which is made up of layers of water and lipids.



This structure forms the outer layer of the skin and is called the stratum corneum. The outer layer can be compared to a wall and is often referred to as having a bricks and mortar structure. It consists of corneocytes (bricks) which are bound to the lamellar lipid structure (mortar). This structure is essential for an effective barrier and will prevent excessive water loss (trans-epidermal water loss), as well as the penetration of irritating substances. To prevent a drop in water level and skin dehydration, water is constantly sourced from the deeper layers.

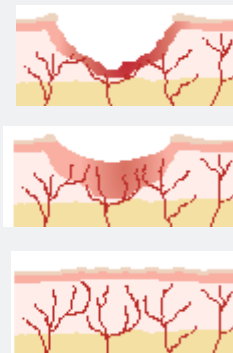
SKIN DAMAGE OR INJURY

Damage to the epidermis does not leave scars. Injuries that penetrate through to the dermis do however. The deeper the skin injury, the longer it takes for the skin barrier to be restored.

The renewal of the epidermis takes just fourteen days, but depending on the depth of the wound the increased trans-epidermal water loss (TEWL) may persist for 150 to 500 days.

While the epidermis is not functioning completely and the dermal remodelling is not completed, the barrier function of the renewed skin is problematic and needs special care in order to combat further water loss.

This renewal process goes hand in hand with a dry, itchy skin that is much more sensitive and which is more easily penetrated by irritating substances, allergens and micro-organisms.



Cica



Daily comfort care for the burned skin or scars. The Cica cream will improve the appearance of the scars, the barrier function and the skin elasticity.

- Facilitate functional rehabilitation
- Facilitate the process of donning pressure garments
- Omega 3 and 6 Fatty Acids (Seabuckthorn and Camelina Sativa Seed Oil) stimulate the skin regeneration
- Palmitholeic acid Omega 7 Fatty Acid accelerates cell rejuvenation
- Improves the healing process and prevents deterioration of the cell membranes
- Opuntia Ficus-Indica Stem Extract and Bisabolol prevent and reduce irritation and itching

| Packaging | Product code | EAN | Weight | Quantity | Total Weight |
|-----------|--------------|---------------|--------|----------|--------------|
| 100 ml | CIC100 | 5425029890152 | 0,130 | 18 | 2,5kg |
| 500ml | CIC500 | 5425029891401 | 0,531 | 12 | 6,647kg |

After Care

Follow the easy **2 step-plan** to reduce scarring, itching and dryness of the skin:

STEP 1. BOOSTER PHASE:

Repair Oil

Intense skin care oil to improve the appearance of scars and to activate the skin regeneration process in case of scars and striae. Contains 100 % Rosa Canina oil and is recommended to use for 2-3 weeks maximum. Afterwards apply the Skin Optimizing Oil.



- Optimises the barrier function
- Promotes skin regeneration
- Improves the elasticity of the skin
- Improves the appearance of scars
- Increases the moisture content of the skin
- Reduces flaking
- Supports the quality of primary care

USE: Recommended to use **for 2-3 weeks maximum.**
Afterwards apply the Skin Optimizing Oil.

| Packaging | Product code | EAN | Weight | Quantity | Total Weight |
|-----------|--------------|---------------|--------|----------|--------------|
| 10ml | REPAIR10 | 5425029890121 | 0,043 | 12 | 0,5kg |

STEP 2. OPTIMISING PHASE:

Skin Optimising Oil

Repairs and reduces older and new scarring, and other skin problems such as acne scars, stretch marks, reduces discoloration and wrinkles.



- Optimises the barrier function
- Promotes skin regeneration
- Improves the elasticity of the skin
- Improves the appearance of scars
- Increases the moisture content of the skin
- Reduces flaking
- Supports the quality of primary care

USE: Recommended to **use twice daily directly after the 2 week booster phase.** Can be used as long as required.

| Packaging | Product code | EAN | Weight | Quantity | Total Weight |
|-----------|--------------|---------------|--------|----------|--------------|
| 30ml | SOO30 | 5425029890497 | 0,047 | 12 | 0,6kg |

Silicon Touch



Occlusive treatment for small scars. Decreases the transepidermal water loss and improves the appearance and discoloration of scars.

- Leaves a non-greasy and invisible protective film on the skin
- Reduces small scars (less than 5 cm long)
- Reduces discoloration associated with scars
- Ideal for facial scar treatment and small post-surgical/linear scars
- May be used under cosmetics
- Indicated in the management of keloid and hypertrophic scars

| Packaging | Product code | EAN | Weight | Quantity | Total Weight |
|-----------|--------------|---------------|--------|----------|--------------|
| 15ml | ST15 | 5425029890145 | 0,038 | 12 | 0,5kg |

THE IMPORTANCE OF FATTY ACIDS IN SKIN REGENERATION

The essential building bricks Linoleic Acid (Omega - 6 Fatty Acid) and Alpha - Linolenic Acid (Omega -3 Fatty Acid) are not produced in our body even though they are an absolute necessity for the skin cell regeneration and the repair of the barrier function of the skin. They are also anti-inflammatory, so they help calm and soothe skin conditions. Linoleic Acid improves the cohesion of the cells and naturally protects the skin structure from aggressions. If Omega 6 is lacking during the healing process of the skin other available fatty acids will replace it, but this will result in an increased skin sensitivity, often leaving the skin dry and itchy. Palmitoleic Acid (Omega 7 fatty acid) is a component of human sebum and very uncommon within the plant kingdom. Omega 7 supports the formation of cell tissue and wound healing and has antimicrobial activity. Damaged skin lacks natural sebum and can become dry and flaky.



Can we reduce scars by ingesting essential fatty acids?

Adding essential fatty acids (Omega 3,6 and 7) through diet has a limited and time consuming effect on skin health . The epidermal layers of the skin do not contain blood vessels to supply the cells with nutrients, as blood vessels are only found in the dermis. Additionally the structure of the epidermis prevents the circulation of extracellular fluids . Therefore, the outer layers of the epidermis are provided with less nutritional support than the underlying cells.

So how effectively supply the essential fatty acids?

Fortunately the skin is directly affected by the use of topical applications. Topical application of Omega 3, 6 and 7 has been proven to be very efficient in supplying essential fatty acids to the skin.



Daily Care

NAQI[®]
SKIN CARE INNOVATORS

The health of the skin mirrors the overall health. A healthy skin is supple, fresh and radiant. Many external (wind, sun, ...) and internal (dehydration, illness,...) factors influence the skin. NAQI[®] offers a **full range** for the **complete daily care of the skin: hydration, protection** against environmental factors and **reduction of premature ageing**.

Visage 2



Daily skin care routine, formulated with Ectoin[®] and Aquaxyl[™] to protect the skin against the visible signs of environmental stress and skin ageing.

| Packaging | Product code | EAN | Weight | Quantity | Total Weight |
|-----------|--------------|---------------|--------|----------|--------------|
| 50ml | FCVIS2 | 5425029891074 | 0,091 | 15 | 1,47kg |

Visage 4



Contains all properties of VISAGE 2 and additionally covers the skin with a light protective film to protect from negative effects from wind & cold during outdoor activities.

| Packaging | Product code | EAN | Weight | Quantity | Total Weight |
|-----------|--------------|---------------|--------|----------|--------------|
| 50 ml | FCVIS4 | 5425029891067 | 0,090 | 15 | 1,45kg |

Foot Deo Cream Gel

NEW



Biological Deodorant. A natural way to help prevent unpleasant odours while maintaining healthy microflora and not irritating the skin. Foot Deo Cream Gel also improves skin hydration and strengthens the skin barrier so the skin becomes soft and supple again. NAQI Foot Deo Cream Gel is suitable for dry and sensitive skin.

| Packaging | Product code | EAN | Weight | Quantity | Total Weight |
|-----------|--------------|---------------|--------|----------|--------------|
| 100ml | FDCG | 5425029892644 | 0,135 | 20 | 2,8kg |

Daily Care

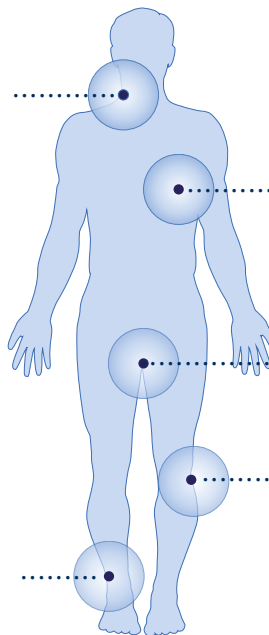
Body Screen



Prevents any friction problems and irritation in daily life. The intensively hydrating lotion provides the ideal barrier to reduce direct contact between the skin and clothing, shoes or skin on skin contact.

| Packaging | Product code | EAN | Weight | Quantity | Total Weight |
|-----------|--------------|---------------|--------|----------|--------------|
| 50 ml | BS50 | 5425029891142 | 0,080 | 20 | 1,8kg |
| 100 ml | BS100 | 5425029890428 | 0,136 | 20 | 2,9kg |
| 500 ml | BS500 | 5425029891159 | 0,536 | 12 | 6,8kg |

Irritation due to shirt, tie,...



Skin friction caused by sweat and clothes

Thighs and groin irritation

Friction due to prosthesis, pressure garments,...

Blisters and chafing

Fingertip Care



Very mild cleaning wipes, suitable for daily cleansing of sensitive skin.

| Packaging | Product code | EAN | Weight | Quantity | Total Weight |
|-----------|--------------|---------------|--------|----------|--------------|
| 50pcs | FTC-wipes | 5425029890459 | 0,205 | 24 | 5,2kg |

Dry Skin Care

This range is specifically developed for the care of vulnerable & dry skin, particularly suited for diabetics.

Body Lotion

Daily care of dry skin to optimise the barrier function.



| Packaging | Product code | EAN | Weight | Quantity | Total Weight |
|-----------|--------------|---------------|--------|----------|--------------|
| 200 ml | BLD200 | 5425029890107 | 0,210 | 10 | 2,2kg |
| 500ml | BLD500 | 5425029890114 | 0,512 | 12 | 6,4kg |

Body Care

Intense hydration and protection for the dry, vulnerable and sensitive skin.



| Packaging | Product code | EAN | Weight | Quantity | Total Weight |
|-----------|--------------|---------------|--------|----------|--------------|
| 100ml | BCD100 | 5425029890053 | 0,123 | 20 | 2,6kg |
| 500ml | BCD500 | 5425029890060 | 0,540 | 12 | 6,7kg |

Foot Care

Soft, non-greasy and intensively hydrating foot cream.



| Packaging | Product code | EAN | Weight | Quantity | Total Weight |
|-----------|--------------|---------------|--------|----------|--------------|
| 100ml | FCD100 | 5425029890077 | 0,132 | 20 | 2,7kg |
| 500ml | FCD500 | 5425029890084 | 0,535 | 12 | 6,7kg |

Body Soap

Very mild cleanser, suitable for daily cleansing of sensitive & dry skin.



| Packaging | Product code | EAN | Weight | Quantity | Total Weight |
|-----------|--------------|---------------|--------|----------|--------------|
| 500ml | BSD500 | 5425029890091 | 0,560 | 12 | 7,0kg |



Hand Care

NAQI[®]
SKIN CARE INNOVATORS

A **complete skin-friendly range** for professionals who often wash and disinfect their hands.

Liquid Soap

Mild and skin-friendly hand soap, suitable for frequent washing of hands.



| Packaging | Product code | EAN | Weight | Quantity | Total Weight |
|-----------|--------------|---------------|--------|----------|--------------|
| 500ml | LQS500 | 5425029890534 | 0,563 | 12 | 7,0kg |
| 5 L | LQS5 | 5425029890541 | 5,500 | 1 | 5,5kg |

Hand Emulsion

An intensely nourishing hand cream with a water-repellent and protective film that strengthens and repairs the barrier function of the skin.



| Packaging | Product code | EAN | Weight | Quantity | Total Weight |
|-----------|--------------|---------------|--------|----------|--------------|
| 100 ml | HE100 | 5425029890558 | 0,138 | 20 | 2,9kg |
| 500ml | HE500 | 5425029890565 | 0,543 | 12 | 6,8kg |



Oral Care

NAQI[®]
SKIN CARE INNOVATORS

Specific range developed **to keep the teeth and gums healthy**. These products all contain a high concentration of **natural stress-protecting molecules**. These prevent the formation of a biofilm on the teeth, which reduces the formation of plaque. While stabilizing the resident oral flora, it will impede pathogenic bacteria to settle. NAQI[®] Oral Care is pH-neutral and contains no fluorine, no sweeteners, nor chlorhexidine.

Oral Care Gel

For daily oral care. To protect the mouth and gums before a dental procedure and to improve the recovery afterwards.



| Packaging | Product code | EAN | Weight | Quantity | Total Weight |
|-----------|--------------|---------------|--------|----------|--------------|
| 100ml | OCG100 | 5425029891838 | 0,151 | 18 | 3,0kg |

Oral Care Gel Pro

Designed to be used locally and immediately after a dental procedure to improve the recovery of gums.



| Packaging | Product code | EAN | Weight | Quantity | Total Weight |
|-----------|--------------|---------------|--------|----------|--------------|
| 100ml | OCGP100 | 5425029891821 | 0,142 | 20 | 3,1kg |

Oral Care Wash & Rinse

The mouthwash intensively hydrates and provides a protective film for the teeth.



| Packaging | Product code | EAN | Weight | Quantity | Total Weight |
|-----------|--------------|---------------|--------|----------|--------------|
| 250ml | OCWR250 | 5425029891845 | 0,298 | 10 | 3,3kg |



[FACEPEETERS]

Sports Lotions

NAQI[®]
SKIN CARE INNOVATORS

NAQI's roots lie in **sports medicine & dermatology**, enabling us to offer products not only for professionals but also for everyone who enjoys an active lifestyle, **NAQI[®] Sports Lotions** provide the **appropriate protection and recovery** for all.

Proud supplier of:



PREPARE

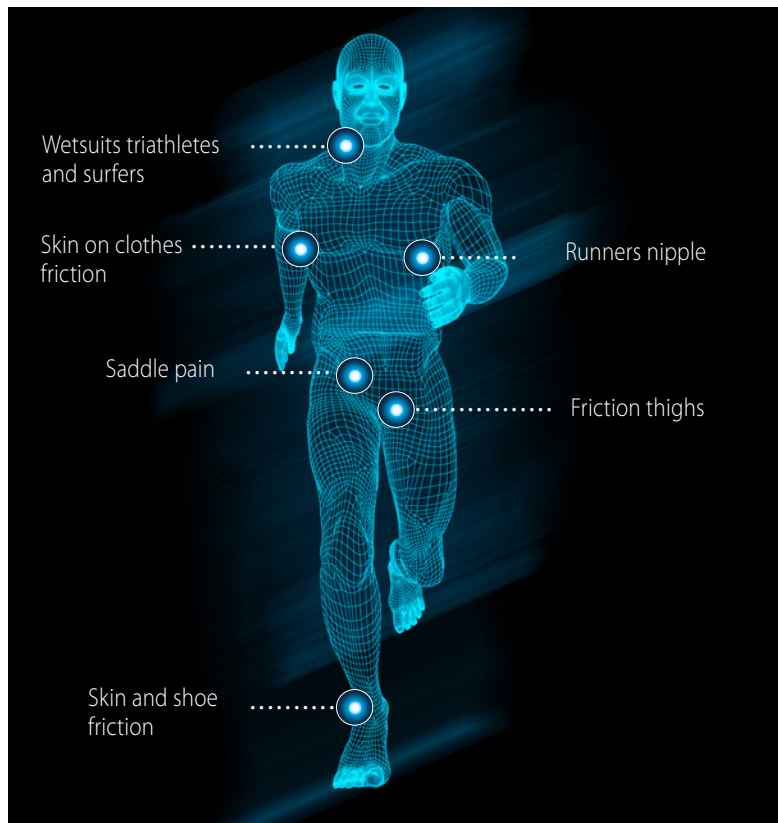
A good performance is based on a great preparation. Prepare your skin to what's coming and your skin will be grateful!

AntiFriction Cream

NEW

Specially formulated for active people, providing intense nourishment and protection against chafing and irritation.

| Packaging | Product code | EAN | Weight | Quantity | Total Weight |
|-----------|--------------|---------------|--------|----------|--------------|
| 100 ml | AFC100 | 5425029892798 | 0,136 | 20 | 2,8kg |



Sports Lotions

Face Protector Sport

Facial cream that provides natural skin care to protect the face from heat, cold and wind during outdoor activities. Does not contain SPF.



| Packaging | Product code | EAN | Weight | Quantity | Total Weight |
|-----------|--------------|---------------|--------|----------|--------------|
| 50ml | FCS50 | 5425029891289 | 0,082 | 20 | 1,7kg |

Lip Care

Active care for dry lips, the NAQI® Lip Care soothes, protects and intensively hydrates chapped lips.



| Packaging | Product code | EAN | Weight | Quantity | Total Weight |
|-----------|--------------|---------------|--------|----------|--------------|
| 7gr | LC7 | 5425029892460 | 0,018 | 48 | 1,0kg |

Votra Plus

Warming, protective and hydrating foot cream.



| Packaging | Product code | EAN | Weight | Quantity | Total Weight |
|-----------|--------------|---------------|--------|----------|--------------|
| 100 ml | VP100 | 5425029890527 | 0,130 | 20 | 2,7kg |

Aero Speed Gel

Oil gel that reduces aerodynamic resistance in sports where speed is central. Extensive wind tunnel tests demonstrate air resistance can be reduced by almost 4%.



| Packaging | Product code | EAN | Weight | Quantity | Total Weight |
|-----------|--------------|---------------|--------|----------|--------------|
| 100ml | ASG100 | 5425029892118 | 0,151 | 30 | 4,8kg |

PROTECT

Protect your skin from cold, rain and wind. Keep your skin beautiful and healthy and your muscles warm!

Warming Up Competition

Water-resistant, warming lipogel that protects the skin from rain and cold and prepares the muscles for training.

n° 1

Mild warm-up for sensitive skin.



| Packaging | Product code | EAN | Weight | Quantity | Total Weight |
|-----------|--------------|---------------|--------|----------|--------------|
| 100 ml | WUC1100 | 5425029890602 | 0,129 | 20 | 2,7kg |
| 500 ml | WUC1500 | 5425029890763 | 0,492 | 12 | 6,1kg |

n° 2

Intense warm-up.



| Packaging | Product code | EAN | Weight | Quantity | Total Weight |
|-----------|--------------|---------------|--------|----------|--------------|
| 100 ml | WUC2100 | 5425029890435 | 0,130 | 20 | 2,7kg |
| 500 ml | WUC2500 | 5425029890770 | 0,501 | 12 | 6,3kg |

n° 3

Very intense warm-up.



| Packaging | Product code | EAN | Weight | Quantity | Total Weight |
|-----------|--------------|---------------|--------|----------|--------------|
| 100 ml | WUC3100 | 5425029890596 | 0,127 | 20 | 2,6kg |
| 500ml | WUC3500 | 5425029890787 | 0,489 | 12 | 6,1kg |

Sports Lotions

Warming Stick



Easy to apply warming wax with intense heat effect for passive warm-up.

| Packaging | Product code | EAN | Weight | Quantity | Total Weight |
|-----------|--------------|---------------|--------|----------|--------------|
| 75 ml | WUS75 | 5425029892200 | 0,139 | 12 | 1,8kg |

Start Oil



Water-repellent oil, reduces heat loss to keep the skin and muscles warm during exercise in rain.

| Packaging | Product code | EAN | Weight | Quantity | Total Weight |
|-----------|--------------|---------------|--------|----------|--------------|
| 200 ml | SO200 | 5425029890329 | 0,210 | 12 | 2,5kg |

Warming Up



Hydrogel that protects from muscles aches and stiffness. For good weather or indoor sports.

| Packaging | Product code | EAN | Weight | Quantity | Total Weight |
|-----------|--------------|---------------|--------|----------|--------------|
| 200ml | WU200 | 5425029890589 | 0,224 | 12 | 2,9kg |

Cool Down



Hydroalcoholic tonic to refresh the body before, during and after exercise.

| Packaging | Product code | EAN | Weight | Quantity | Total Weight |
|-----------|--------------|---------------|--------|----------|--------------|
| 200 ml | CD200 | 5425029890336 | 0,220 | 12 | 2,8kg |



The latest innovation from NAQI[®]. Specifically **developed for the Belgian Olympic teams.**

Cooling Spray



The NAQI[®] Cooling Spray provides an **instant feeling of freshness**, for optimal and comfortable exercise **in very hot and humid weather** conditions.

The active ingredients provide a strong and **long-lasting cold sensation!**

This causes the body temperature to rise more slowly, making the physical effort feel easier and more pleasant.

The spray can be used on clothes and skin.

Clothing:

Spray NAQI[®] Cooling Spray liberally on the shirt before the activity, any excess liquid will dry off quickly.

Additional product can always be used for extra cooling during sports.

Skin:

Spray directly onto the skin, focusing on the activated body parts, back and neck.

| Packaging | Product code | EAN | Weight | Quantity | Total Weight |
|-----------|--------------|---------------|--------|----------|--------------|
| 300ml | CS300 | 5425029892576 | 0,385 | 12 | 4,9kg |

Sports Lotions

RECOVER

While exercising, the muscles are put under great pressure. This can result in a feeling of heaviness, fatigue- and muscle pain. To alleviate this heaviness and discomfort, the NAQI® skin experts developed specific products with a unique effect on recovery after a sporting effort.

Recovery Gel

Reduces muscle fatigue and soreness after physical exercise.



| Packaging | Product code | EAN | Weight | Quantity | Total Weight |
|-----------|--------------|---------------|--------|----------|--------------|
| 100ml | RCG100 | 5425029891272 | 0,137 | 20 | 2,8kg |
| 500ml | RCG500 | 5425029891531 | 0,536 | 12 | 6,7kg |



BODY WASH

Whether on the road or in the comfort of a shower at home, our sports hygiene products make sure every athlete and sports enthusiast will be fresh and clean in no time.

Rapid Clean Gel

Powerful cleaning gel, especially designed to easily remove dirt (eg. dried mud) and oil-rich (sports) products.



| Packaging | Product code | EAN | Weight | Quantity | Total Weight |
|-----------|--------------|---------------|--------|----------|--------------|
| 200ml | RAC200 | 5425029892170 | 0,235 | 12 | 2,9kg |

Sport Shower

Refreshing and invigorating shower gel.



| Packaging | Product code | EAN | Weight | Quantity | Total Weight |
|-----------|--------------|---------------|--------|----------|--------------|
| 100 ml | SS100 | 5425029892132 | 0,125 | 40 | 5,1kg |
| 200 ml | SS200 | 5425029892125 | 0,233 | 12 | 2,9kg |

Cleanser Gel

Removes all traces of dirt and oily substances with a simple swipe. No need for water!



| Packaging | Product code | EAN | Weight | Quantity | Total Weight |
|-----------|--------------|---------------|--------|----------|--------------|
| 500ml | CL500 | 5425029891111 | 0,534 | 6 | 3,5kg |



Cold & Hot

NAQI[®]
SKIN CARE INNOVATORS

High quality reusable cold and hot packs. Flexible, strong, easy-to-use and hygienic, these packs are **ideal for professional and private use**. The gel is non-toxic and biodegradable.

Manufactured according to MDR 2017/745

Cold therapy

Cold Pack



NAQI[®] reusable cold packs remain flexible up to -30°C and are available in a wide variety of sizes. Highly flexible and easy-to-use, these cold packs easily fit around injured areas. Printing on the inside, hygienic and easy to clean design.

| Packaging | Product code | EAN | Weight | Quantity | Total Weight |
|-----------|--------------|---------------|--------|----------|--------------|
| 13x7 cm | CPMIFB | 5425029890794 | 0,810 | 24 | 1,6kg |
| 27x8 cm | CPSMFB | 5425029890817 | 0,300 | 12x2 | 7,3kg |
| 27x13 cm | CPSTFB | 5425029890442 | 0,399 | 10 | 4,1kg |
| 27x24 cm | CPMEFB | 5425029890855 | 0,859 | 10 | 8,7kg |
| 37x27 cm | CPLFB | 5425029890862 | 1,330 | 10 | 13,3kg |

Protection Sleeves



NAQI[®] protection sleeves for personal use made of non-woven fabric. These non-woven sleeves in different sizes fit the NAQI[®] cold packs to protect the skin from cold. Available in different sizes and with or without velcro strap.

| Packaging | Product code | EAN | Weight | Quantity | Total Weight |
|-----------|--------------|---------------|--------|----------|--------------|
| 15x9 cm | VLIESMINI | 5425029890923 | 0,004 | 50 | 0,3kg |
| 27x9 cm | VLIESSMALL | 5425029890930 | 0,003 | 100 | 0,3kg |
| 27x14 cm | VLIESST | 5425029890947 | 0,005 | 100 | 0,45kg |
| 27x14 cm | VLIESST-BIND | 5425029890954 | 0,006 | 100 | 0,63kg |
| 27x27 cm | VLIESME | 5425029890961 | 0,01 | 50 | 0,52kg |
| 38x34 cm | VLIESLARGE | 5425029890978 | 0,014 | 50 | 0,7kg |

Cold & Hot

Cold Pack Sport



This unique Cold Pack remains cold for a long period and is flexible up to -13°C .

| Packaging | Product code | EAN | Weight | Quantity | Total Weight |
|-----------|--------------|---------------|--------|----------|--------------|
| 27x13 cm | CPSPFB | 5425029890848 | 0,410 | 10 | 4,2kg |

Cold & Heat therapy

Cold Hot Pack



This high-quality, strong reusable Cold Hot pack is suitable for both cold and heat therapy, remains flexible up to -30°C and can be heated up to 60°C .

| Packaging | Product code | EAN | Weight | Quantity | Total Weight |
|-----------|--------------|---------------|--------|----------|--------------|
| 27x13 cm | CHPFB | 5425029890305 | 0,400 | 10x1 | 4,1kg |

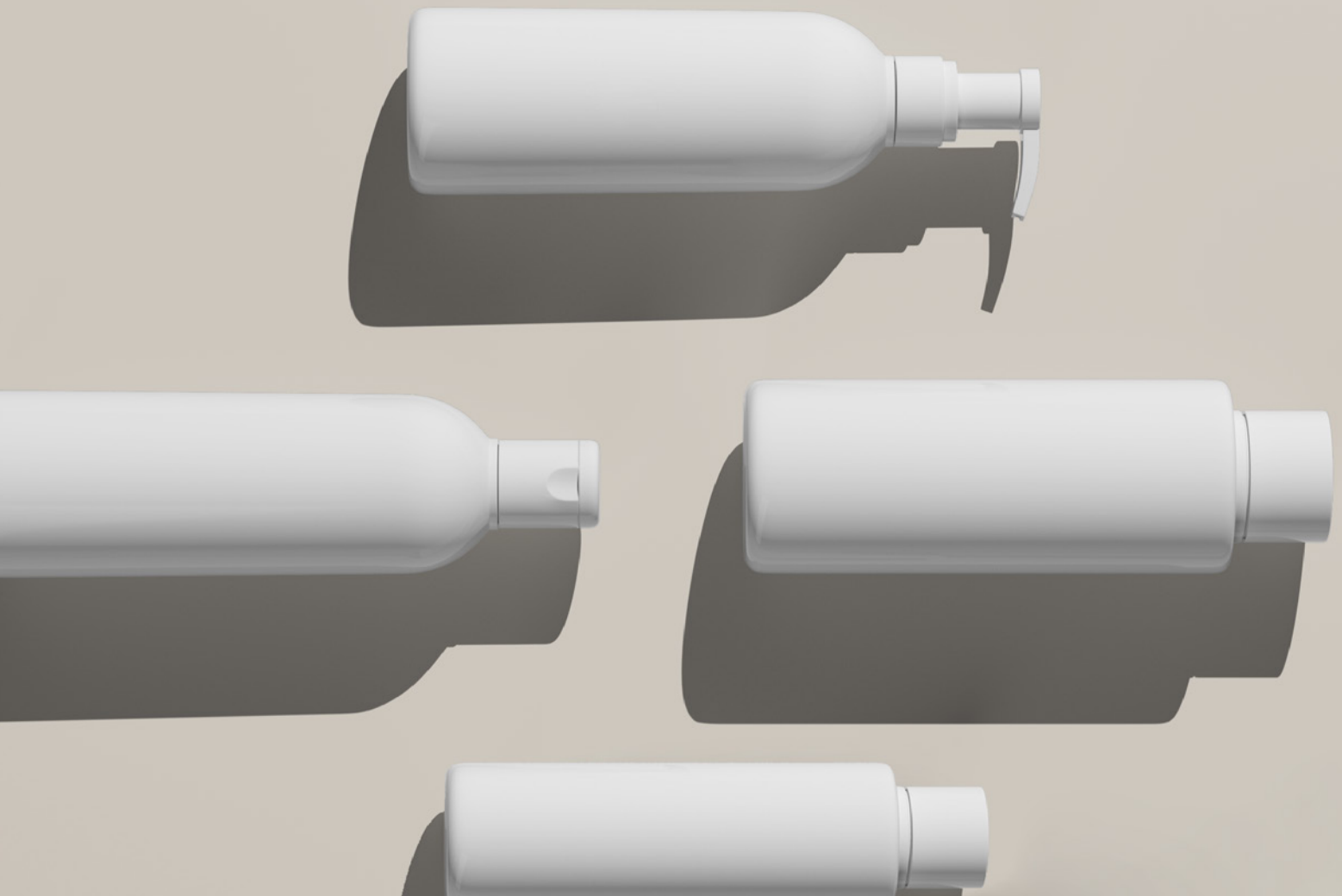
Heat therapy

Hot Pack



Reusable Heat Pack, consists of 3 parts (detachable at the seam) and can be heated in the microwave or heating bath. Relieves sore muscles in a natural way.

| Packaging | Product code | EAN | Weight | Quantity | Total Weight |
|-----------|--------------|---------------|--------|----------|--------------|
| 38x32 cm | HPM | 5425029890411 | 1,960 | 10 | 19,6kg |



Private label

NAQI[®]
SKIN CARE INNOVATORS

Make your product a reality!

Innovation & Skin care go hand in hand with NAQI[®]

Private label

NAQI® not only produces under its own label but also manufactures products for many top brands.

From leading manufacturers of burn wound garments to international cosmetics suppliers, NAQI® offers its customers a wide range of services.



From the start on, NAQI® guides its Private Label customers through the **entire process**: from product development to warehousing. NAQI® is specialized in job shop production which means we accept **flexible order quantities**.

NAQI®'s reputation of quality excellence and flexibility reinforces its reputation as PLM manufacturer of choice.

NAQI® is a ISO13485:2016 and GMP certified manufacturer.



Cosmetics

Firming & Slimming



With active ingredients of Actigym™ the silhouette is made slimmer and firmer, just like endurance training would do. The skin is strengthened and the circumference of the waist, thighs and arms is reduced. This product also promotes weight loss.

Anti-Cellulite



Promotes the breakdown of fat and stimulates microcirculation by activating the cells, while the skin becomes visibly firmer and smoother. Improves the elasticity of the skin and strengthens it, making cellulite less visible.

Face Wash



Gentle cleaning gel for daily use. The foaming gel intensively hydrates, nourishes and calms the face.

Skin Calmer



A softening lotion for sensitive, red or itchy skin. It breaks the chain reaction of skin inflammation and itching and protects the cutaneous nervous system against environmental factors.

Kids Care



Combination of body lotion and face wash specially designed for the sensitive skin of children.

Medical

Ultrasound Spray

Innovative spray to be used for ultrasound and electrotherapy.
Clear, non-sticky and easy to manipulate in spray form.



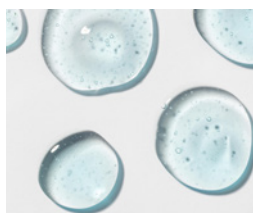
Cleaning Soap

Cleaning soap to gently clean silicone based products.



Special Request

In countries with elevated temperature and moisture, lotions can give a heavy feeling and a gel would be more suitable. The NAQI® R&D team has already altered multiple lotions to a gel and can assist you in defining the possibilities in modifying the carrier of your requested product.



Our Packaging

We take the outmost care in selecting our packaging. Thorough testing of every bottle is indispensable to assure there is no interaction between the product and the packaging or any evaporation with a loss of product as consequence.



Airless Bottle

The 100ml airless bottles ensure the best product protection and optimal dosage. The pump turns 360° therefore making it easy and simple to apply from all possible angles. These bottles offer a maximum of convenience and a minimum of wastage



Touchless Dispenser

The touchless dispensers are easy to install and operate. Providing the perfect dosage of the preferred NAQI[®] product at any time. Refill bottles are available for Massage Lotion Sport – Liquid Soap - ... and can be produced for any other product upon request.



NAQI[®] is looking for distributors to join its
worldwide network.

Want to join us?

Discover what NAQI[®] can offer you
and contact us at sales@naqi.com



[naqi](#)



[@naqi.international](#)



[@naqi_skincare](#)

www.naqifoundation.com

www.naqi.com



NAQI[®]

SKIN CARE INNOVATORS



NAQI[®]

SKIN CARE INNOVATORS

Stadsbeemd 1037, 3545 Halen, Belgium

+32(0)13 460 190

info@naqi.com

www.naqi.com